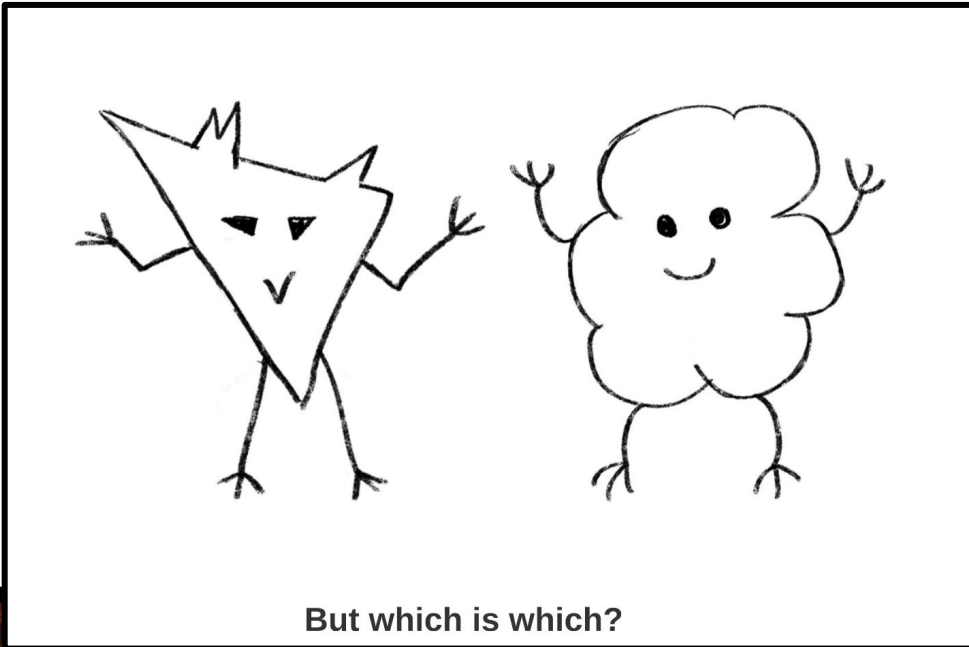




***WHAT ARE THE  
ELEMENTS OF GOOD  
CHARACTER DESIGN?***

# ***MEET FLOMP AND KLANG:***



But which is which?

# ***SIGNIFIERS AND SIGNIFIED***

Signifiers – the Elements

Things that we see

- × Shape
- × Colour
- × Posture
- × Clothing...

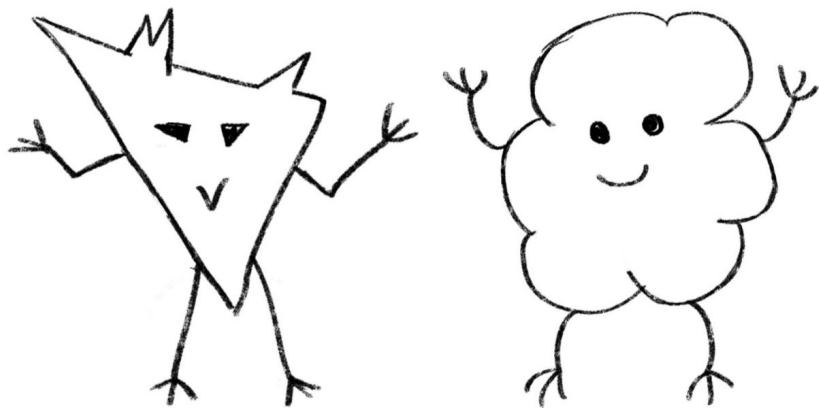
Are connected to

Signified – the meaning

Ideas, meaning and culture such as:

- × Personality
- × Status
- × Age
- × Gender
- × Etc

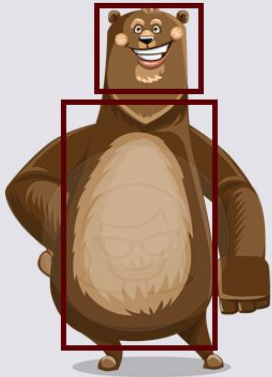
***WHO IS MORE LIKELY TO BE INTERPRETED AS:***



But which is which?

- × The kind one?
- × The clever one?

## **SQUARE SHAPES:**



- × Stable
- × Strong
- × Masculine
- × Warrior
- × Stubborn
- × Confidence
- × reliable

## ***OVAL SHAPES:***



- × Safe
- × Soft
- × Friendly
- × Harmless
- × Naive
- × 'young'
- × Used in very young (baby) or older (grandma) characters

## **TRIANGULAR SHAPES:**



- × Dangerous
- × Villainous
- × Determination
- × Powerful







## ***YOUR TASK NOW***

- × Create 3 characters that are round, squarish, triangular
- × Remember + use your research and paste-up inspiration
- × Refine at least 1 of these a bit further